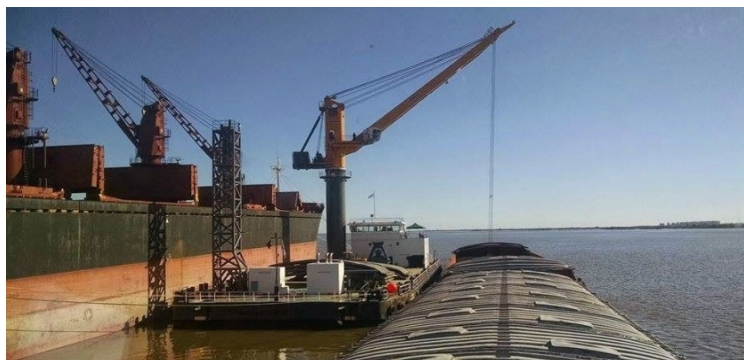




General Info	
Owners	Fiorucci International
Location	Uruguay River - Km 20
Berth	n/a



Loa x Beam (in meters)	63 x 23
Max. LOA (in meters)	n/a
Depth (in meters)	n/a
Air Draft at Datum (in meters)	18
Cargo Suitability	Grain, By Products & Bulk Cargo

Fiorucci Transshipment Station

Port Facilities	Crane
-----------------	-------

Cargoes Loaded
Grain
Soyabean Meal

Loading / Discharging rates	
Transshipment	250 Mt x Hour

Working time	
Monday to Friday	From 0700 hs to 1900 hs
Saturday	From 0700 hs to 1300 hs
Shift	6 Hours
Remaining times are considered as overtime	

Stowage Factors

Fresh Water	Bunker / Slop operations
Not available	Only at Roads (by barge)

[Go back to Menu](#)