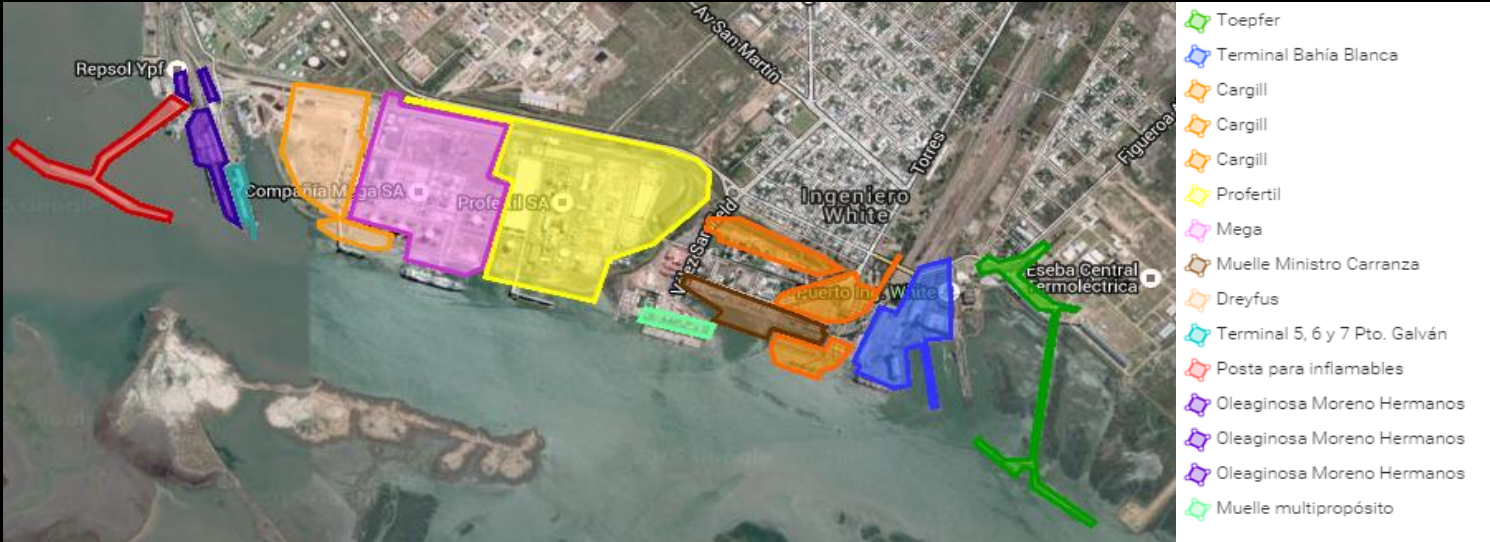




# Bahía Blanca port Terminals



Alfred C. Toepfer



Berths 5/6



Berths 7/8



Berth 9



Cargill



Profertil



Oleaginosa Moreno Hnos.S.A.

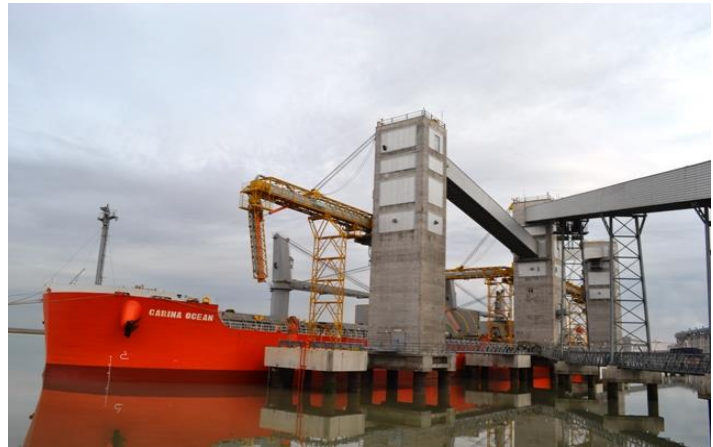


LDC Argentina S.A.



General Info	
Owners	Alfred C. Toepfer International S.A.
Location	Ing. White port
Berth	Port Side

Frontage (in meters)	365
Max. LOA (in meters)	275
Depth (in meters)	14.1
Air Draft at Datum (in meters)	No restriction
Cargo Suitability	Grain, Byproducts & Flammable Oil



Port Facilities	Silos - Grain Conveyor belt
-----------------	-----------------------------

#### Toepfer S.A. - Grain Terminal

Loading / Discharging rates	
Wheat / Maize	abt 700 Mt per hour x gang
Soya Beans	abt 700 Mt per hour x gang
Flammable Oil (Discharge)	abt 1100 Mt per hour

Cargoes Loaded
Wheat
Maize
Soya Beans
Barley

Working time	
Monday to Friday	From 0700 hs to 1900 hs
Saturday	From 0700 hs to 1300 hs
Shift	6 Hours
Remaining times are considered as overtime	

Stowage Factors	
Barley	57/58
Wheat	43/44
SBS	48/49
Maize	44/45

Fresh Water	Bunker / Slop operations
Available (By Barge)	Available (By Barge)

Relevant Info	
Water Density	Brackish (Dens. 1015/1020)
Garbage Removal Service	Yes

Tug Boats	
LOA up to 150m	1 Tugboat
LOA over 150 m	2 Tugboats



General Info	
Owners	Bahia Blanca Port Admin.
Location	Ing. White port
Berth	Port Side

Frontage (in meters)	300
Max. LOA (in meters)	230
Depth (in meters)	8.8
Air Draft at Datum (in meters)	11,40 / 12,40
Cargo Suitability	Grain



Port Facilities	Silos - Elevator -Grain Conv. belt
-----------------	------------------------------------

#### TBB - Berth 5/6

Loading rates	
Wheat / Maize	abt 350 Mt per hour x gang
Soya Beans	abt 300 Mt per hour x gang
Barley / Malt	abt 200 Mt per hour x gang

Cargoes Loaded
Wheat
Maize
Soya Beans
Barley
Malt

Working time	
Monday to Friday	From 0700 hs to 1900 hs
Saturday	From 0700 hs to 1300 hs
Shift	6 Hours
Remaining times are considered as overtime	

Stowage Factors	
Barley	57/58
Wheat	43/44
SBS	48/49
Maize	44/45

Fresh Water	Bunker / Slop operations
Not available	Not available

Relevant Info	
Water Density	Brackish (Dens. 1015/1020)
Garbage Removal Service	Yes

Tug Boats	
LOA up to 150m	1 Tugboat
LOA over 150 m	2 Tugboats

[Go back to Menu](#)



General Info	
Owners	Bahia Blanca Port Admin.
Location	Ing. White port
Berth	Port Side

Frontage (in meters)	300
Max. LOA (in meters)	230
Depth (in meters)	7.4
Air Draft at Datum (in meters)	11,40 / 12,40
Cargo Suitability	Grain



Port Facilities	Silos - Elevator -Grain Conv. belt
-----------------	------------------------------------

#### TBB - Berth 7/8

Loading rates	
Wheat / Maize	abt 350 Mt per hour x gang
Soya Beans	abt 300 Mt per hour x gang
Barley / Malt / Oats	abt 200 Mt per hour x gang

Cargoes Loaded
Wheat
Maize
Soya Beans
Barley
Malt
Oats

Working time	
Monday to Friday	From 0700 hs to 1900 hs
Saturday	From 0700 hs to 1300 hs
Shift	6 Hours
Remaining times are considered as overtime	

Stowage Factors	
Barley	57/58
Wheat	43/44
SBS	48/49
Maize	44/45
Oats	61/63

Fresh Water	Bunker / Slop operations
Not available	Not available

Relevant Info	
Water Density	Brackish (Dens. 1015/1020)
Garbage Removal Service	Yes

Tug Boats	
LOA up to 150m	1 Tugboat
LOA over 150 m	2 Tugboats

[Go back to Menu](#)



General Info	
Owners	Bahia Blanca Port Admin.
Location	Ing. White port
Berth	Port Side

Frontage (in meters)	294
Max. LOA (in meters)	266
Depth (in meters)	14.1
Air Draft at Datum (in meters)	14,00 / 15,00
Cargo Suitability	Grain



Port Facilities	Silos - Elevator -Grain Conv. belt
-----------------	------------------------------------

#### TBB - Berth 9

Loading rates	
Wheat / Maize	abt 500 Mt per hour x gang
Soya Beans	abt 500 Mt per hour x gang

Cargoes Loaded
Wheat
Maize
Soya Beans

Working time	
Monday to Friday	From 0700 hs to 1900 hs
Saturday	From 0700 hs to 1300 hs
Shift	6 Hours
Remaining times are considered as overtime	

Stowage Factors	
Maize	44/45
Wheat	43/44
SBS	48/49

Fresh Water	Bunker / Slop operations
Available (by Barge)	Available (by Barge)

Relevant Info	
Water Density	Brackish (Dens. 1015/1020)
Garbage Removal Service	Yes

Tug Boats	
LOA up to 150m	1 Tugboat
LOA over 150 m	2 Tugboats

[Go back to Menu](#)





General Info	
Managers	Cargill S.A.C.I.
Location	Ing. White port
Berth	Port side

Frontage (in meters)	280
Max. LOA (in meters)	270
Depth (in meters)	13.7
Air Draft at Datum (in meters)	No Restriction
Cargo Suitability	Grain, By products & Vegoil



Port Facilities	Silo - Belt Conveyor - Tanks - Pipelines
-----------------	--

Cargill Terminal - Cargill
----------------------------

Loading / Discharging rates	
Grain	abt 900 Mt x Hour x gang
By Products	abt 600 Mt x Hour x gang
Vegoils	abt 850 Mt x Hour

Cargoes Loaded
Wheat
Maize
SBS
Sunflower
SBM
Soyabeans Oil
Sunflower Oil

Working time	
Monday to Friday	From 0700 hs to 1900 hs
Saturday	Overtime
Shift	6 Hours
Remaining times are considered as overtime	

Fresh Water	Bunker / Slop operations
Available (by Barge)	Available (by Barge)

Relevant Info	
Water Density	Brackish (Dens. 1015/1020)
Tides Difference	1,00 m / 1,20 m

Tug Boats	
LOA up to 80m	No need
LOA between 80 & 100 m	1 Tugboat
LOA over 140 m	2 Tugboats

Stowage Factors	
Barley	57/58
Wheat	43/44
SBS	48/49
SFP	85/90
SBM	57/58
SBMP	49/50

[Go back to Menu](#)



General Info	
Managers	Profertil S.A.
Location	Ing. White port
Berth	Port side

Frontage (in meters)	250
Max. LOA (in meters)	234
Depth (in meters)	13.4
Air Draft at Datum (in meters)	No Restriction
Cargo Suitability	Bulk Cargo

Port Facilities	Silo - Tanks
-----------------	--------------

### Berth 6 - Quequén

Loading rates	
Urea	abt 800 Mt x Hour x line
Ammonia	abt 500 Mt x Hour x line

Cargoes Loaded
Grannular Urea
Ammonia

Working time	
Monday to Friday	From 0700 hs to 1900 hs
Saturday	Overtime
Shift	6 Hours
Remaining times are considered as overtime	

Fresh Water	Bunker / Slop operations
Not Available	Not Available

Relevant Info	
Water Density	Brackish (Dens. 1015/1020)
Tides Difference	1,00 m / 1,20 m

Tug Boats	
LOA up to 80m	No need
LOA between 80 & 100 m	1 Tugboat
LOA over 140 m	2 Tugboats

Stowage Factors

[Go back to Menu](#)



General Info	
Managers	Oleaginoso Morenos Hnos. S.A.
Location	Galván Port
Berth	Port Side

Frontage (in meters)	270
Max. LOA (in meters)	260
Depth (in meters)	11.58
Air Draft at Datum (in meters)	No Restrictions
Cargo Suitability	Grain, By Products & Vegoils

Port Facilities	Silos - Tanks - Pipelines
-----------------	---------------------------

**OMHSA Berth - Bahia Blanca**

Loading rates	
Wheat / Maize	abt 700 Mt x Hour x gang
Sunflower / SBS	abt 500 Mt x Hour x gang
Vegoils	abt x 700 Mt x Hour

Cargoes Loaded
Wheat
Maize
Soya Beans
Sunflower
Sunflower Oil
Soya Oil

Working time	
Monday to Friday	From 0700 hs to 1900 hs
Saturday	Overtime
Shift	6 Hours
Remaining times are considered as overtime	

Fresh Water	Bunker / Slop operations
Not Available	Not Available

Relevant Info	
Water Density	Brackish (Dens. 1015/1020)
Tides Difference	1,00 m / 1,20 m

Stowage Factors	
Wheat	43/44
Maize	44/45
Soya Beans	48/49
Sunflower Seeds	85/90
Soyabean Pellet	49/50

Tug Boats	
LOA up to 80m	No need
LOA between 80 & 100 m	1 Tugboat
LOA over 140 m	2 Tugboats

[Go back to Menu](#)





General Info	
Managers	LDC Argentina S.A.
Location	Galván Port
Berth	Port Side

Frontage (in meters)	300
Max. LOA (in meters)	260
Depth (in meters)	13
Air Draft at Datum (in meters)	24
Cargo Suitability	Grain & By Products

Port Facilities	Tanks
-----------------	-------

#### LDC Berth - Bahia Blanca

Loading rates	
Grain	abt 800 Mt x Hour x gang
By Products	abt 500 Mt x Hour x gang

Cargoes Loaded
Wheat
Maize
Soya Beans
Sunflower
Sorghum
Barley

Working time	
Monday to Friday	From 0700 hs to 1900 hs
Saturday	Overtime
Shift	6 Hours
Remaining times are considered as overtime	

Fresh Water	Bunker / Slop operations
Not Available	Not Available

Relevant Info	
Water Density	Brackish (Dens. 1015/1020)
Tides Difference	1,00 m / 1,20 m

Tug Boats	
LOA up to 80m	No need
LOA between 80 & 100 m	1 Tugboat
LOA over 140 m	2 Tugboats

Stowage Factors	
Wheat	43/44
Maize	44/45
Soya Beans	48/49
Sunflower Seeds	85/90
Soyabean Pellet	49/50
Sorghum	47/48
Barley	57/58