



## Nueva Palmira Terminals

Choose the Terminal you want to check, then click



Fiorucci Transshipment Station



Ontur Terminal



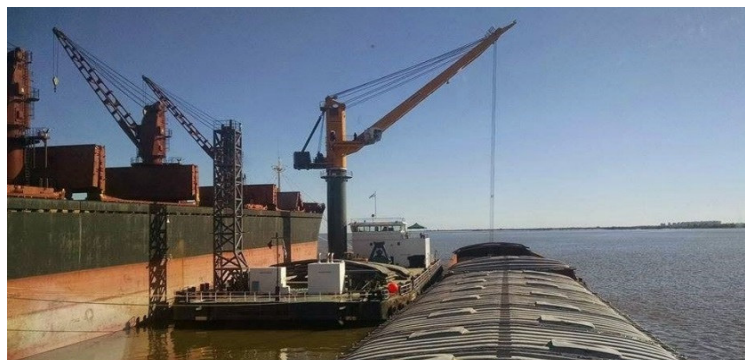
TGU Terminal



Navios Transshipment Terminal



General Info	
Owners	Fiorucci International
Location	Uruguay River - Km 20
Berth	n/a



Loa x Beam (in meters)	63 x 23
Max. LOA (in meters)	n/a
Depth (in meters)	n/a
Air Draft at Datum (in meters)	18
Cargo Suitability	Grain, By Products & Bulk Cargo

### Fiorucci Transshipment Station

Port Facilities	Crane
-----------------	-------

Cargoes Loaded
Grain
Soyabean Meal

Loading / Discharging rates	
Transshipment	250 Mt x Hour

Working time	
Monday to Friday	From 0700 hs to 1900 hs
Saturday	From 0700 hs to 1300 hs
Shift	6 Hours
Remaining times are considered as overtime	

Stowage Factors

Fresh Water	Bunker / Slop operations
Not available	Only at Roads (by barge)

[Go back to Menu](#)



General Info	
Owners	Ontur International S.A.
Location	Uruguay River - Km 0
Berth	Starboard side

Frontage (in meters)	180
Max. LOA (in meters)	270
Depth (in meters)	10
Air Draft at Datum (in meters)	n/a
<b>Cargo Suitability</b>	Grain, Fresh Fruit, Forestry products, containers and Fertilizers

<b>Port Facilities</b>	General Cargo Warehouse - Cold Storage - Crane
------------------------	--

Discharging / Loading rates	
Discharge	350 Mt x Hour
Loading	350 Mt x Hour x Gang

### Ontur Terminal

Cargoes Loaded
Citrics
Wood Pulp
Sugar
Containers

Working time	
Monday to Friday	From 0700 hs to 1900 hs
Saturday	From 0700 hs to 1300 hs
Shift	6 Hours
Remaining times are considered as overtime	

<b>Fresh Water</b>	<b>Bunker / Slop operations</b>
Available	Only at Roads (by barge)

Stowage Factors

[Go back to Menu](#)



TERMINALES GRANELERAS URUGUAYAS S.A.



**General Info**

Owners	Terminales Graneleras Uruguayas S.A.
Location	Uruguay River - Km 0
Berth	Starboard side

Frontage (in meters)	320
Max. LOA (in meters)	270
Depth (in meters)	9,75
Air Draft at Datum (in meters)	18
Cargo Suitability	Grain, Bulk Cargo & By products

Port Facilities	Silo - Belt conveyor - Crane - Storage
-----------------	--

**Loading rates**

Discharge	400 Mt x Hour
Loading	1000 Mt x Hour

**TGU Terminal**

**Cargoes Loaded**

- Grain
- Citrus
- Sugar
- Fertilizers

**Working time**

Monday to Friday	From 0700 hs to 1900 hs
Saturday	From 0700 hs to 1300 hs
Shift	6 Hours
<b>Remaining times are considered as overtime</b>	

**Stowage Factors**


**Fresh Water**

**Bunker / Slop operations**

Available	Only at Roads (by barge)
-----------	--------------------------

[Go back to Menu](#)



General Info	
Owners	Navios South American Logistics Inc
Location	Uruguay River - Km 0
Berth	Starboard side

Frontage (in meters)	320
Max. LOA (in meters)	270
Depth (in meters)	9,75
Air Draft at Datum (in meters)	18
Cargo Suitability	Grain, Bulk Cargo & By products

### Navios Transshipment Terminal

Port Facilities	Silo - Belt conveyor - Crane - Warehouse
-----------------	--

Cargoes Loaded
Iron Ore
Soyabean Meal P
Soyabean Meal
Manganese

Loading rates	
Discharge	250/500 Mt x Hour
Loading	1000 Mt x Hour x Gang

Working time	
Monday to Friday	From 0700 hs to 1900 hs
Saturday	From 0700 hs to 1300 hs
Shift	6 Hours
Remaining times are considered as overtime	

Stowage Factors

Fresh Water	Bunker / Slop operations
Available	Only at Roads (by barge)

[Go back to Menu](#)